

2012/2013
Product Catalogue



Specialists In Commercial & Industrial Cleaning Accessories



GLMESH



Scent Aire



Product Index

- Absorbent **15**
- Accessories **17**
- Aerosols **18–19**
- A-Frame Safety Signs **22**
- Air Care 14–15**
- Air Freshener Cartridges **14–15**
- Air Freshener Dispenser **14**
- Air Sponge **15**
- Auto Scrub Pads **6**

- Belt **27**
- Binch **13**
- Blades, Scraper **28**
- Bonnets, carpet **6**
- Bottles, trigger spray **20**
- Bowl Mops **17**
- Brass Squeegees **24**
- Brooms, lobby dustpan **12**
- Bucket-on-a-Belt **27**
- Bucket, window cleaning **13**
- Bulk Foam Soap **15**
- Bunny Ears **12**

- Carpet Bonnets, Wilen **6**
- Carts Bins & Buckets 13**
- Choosing UHS Floor Pads **5**
- Clean-up Accessories 20**
- Cleanup Cart **13**
- ClearVu Foam Soap Dispenser **15**
- ClearVu Liquid Soap Dispenser **16**
- Cone, locking **29**
- Cranked Joint Angle Adaptor **29**
- Cyclone D Diamond Stone Floor Pads **7**
- Cyclone Stone Floor Pads **7**

- Drum Pump **21**
- Drum Spigot **21**
- Duster Brush **12**
- Dusters and Brushes 12**

- Econo Pump **21**
- Emerald Floor Pad **5**
- Encore Foam Soap Dispenser **15**
- Ergotec Safety Scraper **28**
- Expanding Mobile Barrier **23**
- Extended Safety Sign **22**
- Extension Poles **29**

- Fixi-Clamp **29**
- Floor Maintenance 8**
- Floor Pads 4–7**
 - Auto Scrub and Pre-Burnish 6*
 - Floor Prep Pads 6*
 - High Performance Stripping Pads 6*
- Rectangular Floor Pads 6*
- Wood Floor Pads 6*
- Floor Prep Pads **6**
- Floor Squeegees 8**
- Foam Gun **21**
- Foam Soap **15**
- Foam Soap Dispensers 15**

- Gala Aerosols 18**
 - Air Fresheners 18*
 - General Cleaners 19*
 - Housekeeping 19*
 - Insecticides 18*
- Gel, window cleaning **27**
- Glitterbug **10**
- Glitterpads **9**
- Glomesh Cyclone Stone Floor Pads 7**
- Glomesh Floor Pads 4–7**
- Griddle Cleaning 11**
- Griddle Cleaning Kit **11**
- Griddle Holder **11**
- Griddle Pads **11**
- Griddle Screen **11**
- Grill Bricks **11**
- Grit Lotion Soap Dispenser **16**

- Handbug **10**
- Hand Pads 9**
- Hand Scouring 9**
- Heavy Duty Siphon Drum Pump **21**
- Hi-Flo Kit **29**
- High Access 29**
 - Extension Poles 29*
 - Pole Accessories 29*
- High Performance Stripping Pads **6**

- Janitor's Cart **13**
- Jug, Flat-top **16**

- Liquid Soap Dispensers **16**
- Lobby Dust Pan Brooms **12**
- Lobby Dust Pans 12**
- Lobby Lidpan **12**
- Locking Cone **29**
- Long Handle Scraper **28**

- Maid's Basket **20**
- Mats and Matting 31**
 - Anti-fatigue Mats 31*
 - Entrance Mats 31*
 - Protective Runners 31*
 - Rubber Mats 31*
 - Special Purpose Mats 31*
 - Wet Area Mats 31*
- Maxi Scraper **28**
- MicroBug **10**
- MicroBug Pad **10**
- Microfibre Sponge **9**
- Microfibre Window Cleaning Cloth **27**

- Micro Strip Washer Sleeve **26**
- Mobile Barrier, expanding **23**
- Monsoon Washer Sleeve **26**

- Nifty Nabber **30**
- Nifty Nabber Bagger **30**
- Ninja Channel **24**
- Ninja Squeegee Handle **24**
- Ninja Washer Sleeve **26**

- Original Washer Sleeve **26**
- Outdoor Tools 30**
 - Nabbers & Baggers 30*
- Pee Wee Urinal Screen **17**
- Peoples' Paper Picker Pin **30**
- Pipe Brush **12**
- Plastic End Clips **25**
- Pot 'n' Pan Scrub **11**
- Pot Scrubbing **11**
- Pre-Burnish Floor Pad **6**
- Pro Trim 10 Scraper **28**
- Pumps, Spray Guns, Spigots 21**
- Pump Up Foamer Sprayer **21**
- Pump Up Sprayer **21**
- Purewater Pole Systems 27**

- Rectangular Floor Pads **6**
- Regular Speed Floor Pads **4**
- Rubbers, window squeegee **25**
- RubOut Microfibre Sponge **9**
- Ruf Face Washer Sleeve **26**

- Safety 22**
 - Accessories 23*
 - Safety Signs 22*
 - Traffic Control 23*
- Safety Pole **22**
- Safety Scraper **28**
- Safety Tape **23**
- Sandscreens **6**
- SaniBag **17**
- Sanitary Napkin Receptacle **17**
- Scent Aire Air Care **14–15**
 - AirCare Kit 14*
 - Continuous Cartridge Air Care System 14*
 - Digital Dispenser 14*
 - Maxi 6000 Refill 14*
 - Micro 3000 Refill 14*
 - Micro Digital Dispenser 14*
 - Regular 3400 Refill 14*
 - Sanitiser System 14*
 - Z-Aire 15*
- Scraper, window **28**
- Scrub-A-Dub **10**
- Scrubbing Sponges 8**
- Scrubbing Tools & Accessories 10**
- Short Handle Scraper **28**
- SmartFit Squeegees **8**

- Soap Dispensers 15**
 - Foam Soap Dispensers 15*
 - Grit Lotion 16*
 - Liquid Soap Dispensers 16*
 - Stainless Steel 16*
 - Triad 16*
- Speed Humps **23**
- Spigots **21**
- SplashGard **10**
- Sponge Scourers **8**
- Squeegee **24**
 - Floor Squeegees 8*
 - Window Squeegees 24*
- Stainless Steel Scourer **11**
- Stone Care Floor Pads 7**
 - Cyclone 7*
 - Cyclone D 7*
- Stripping Boots **10**
- Sweeping & Dusting 12**
- Swing Top Tidies **13**
- Swivel Loc Squeegee Handle **25**
- Swivel Strip Washer **26**

- Tilt Cart **13**
- Toilet Bowl Mops Duralon **17**
- Toilet Roll Dispensers **17**
- Tool Holder **20**
- Tool Holder Bar **20**
- Traffic Control **23**
- Triad Soap Dispenser **16**
- Trigger Nabber **30**
- Trigger Sprayers & Bottles **20–21**

- Ultra High Speed Floor Pads **5**
- Urinal Screen **17**

- Visa Versa **25**

- Warning Signs **22**
- Washer Handle, swivel strip **26**
- Washer T-Bar **26**
- Washroom & Air Care 14**
- WaterWands **8**
- WaterWand Standard **8**
- Wheel Stops **23**
- Window Cleaning 24–26**
 - Accessories 27*
 - Bucket 13*
 - Scrapers 28*
 - Squeegees 24–25*
 - Washers 26*
- Window Cleaning Bucket **13**
- Window Cleaning Cloth **27**
- Window Cleaning Kit **27**
- Window Scrapers **28**
- Wood Floor Pads **6**

- Z-Aire Air Care System **15**

GLOMESH

goes green

100% recycled fibers are now used in GLOMESH floor and hand pads, with the identical quality and durability that GLOMESH pads are known for, with *no change in price!*



*It's easier to go green with...
the floor pad innovators...*

GLOMESH

...the floor pad leaders

Regular Speed

the darker the colour the more aggressive the pad

Black	Stripping:	for regular stripping.
Brown	Dry Strip:	for regular stripping or more aggressive cutting back.
Green	Scrubbing:	for wet heavy duty scrubbing or for cutting back.
Blue	Cleaner:	for lighter scrubbing and less aggressive cutting back.
Red	Spray Buff:	for spray or spot buffing. Can be used for dry buffing or very light wet scrub.
Tan	Polishing:	dry polishing buffable finishes. Also has ability to surface clean while polishing.
White	SuperPolish:	dry polishing to a higher shine. Can use water mist to aid obtaining high gloss.



Code: TK Series

What Do Your Pads Cost?

No, not what you pay for your pads. That's not what they cost. What you pay is the price. What it costs is the value you get from the money you pay.

It's the cost that counts ... not what you pay.

If you are using Glomesh floor pads you'll know you are getting around 10,000 sq.m from each pad. No other pad goes that distance. And that's where cost counts rather than price.

The comparison below gives you examples of various pads tested and priced.

Make of Floor Pad	Size	Price Paid	Sq m Achieved	Cost per 100sq m
Regular Speed:				
Glomesh TK400	400mm	\$11.90	9,700	12.2¢
Make A	400mm	\$9.90	4,900	20.2¢
Make B	400mm	\$11.22	7,300	15.3¢
Make C	400mm	\$6.05	2,600	23.2¢

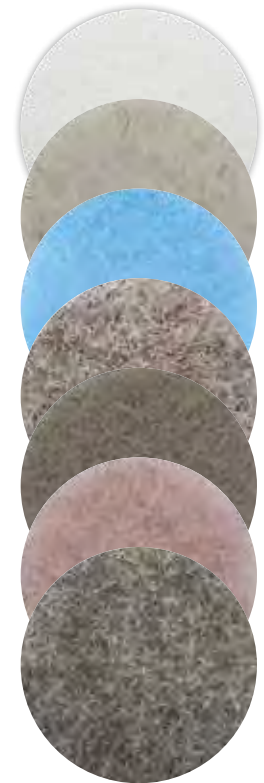
Ultra High Speed:

Glomesh Jackeroo	500mm	\$23.55	10,200	23.0¢
Make D (hair)	500mm	\$15.12	2,800	54.0¢
Make E	500mm	\$14.96	4,900	30.5¢

So now you know that cost and price are not the same.
So what do your pads cost?

Ultra High Speed see chart for relationship of polish and machine

- Beige 2000** Soft pad for soft to medium finishes.
- Jackaroo Lite** Soft pad for soft to medium finishes with natural hair to cut drag, enhance gloss.
- Blue Ice** Soft pad for soft to medium finishes removes less finish, gives up to 30% greater gloss.
- Coco** Soft pad for soft, very buffable finishes. Natural coco fibre cuts drag, replaces burnt hair odour with coconut fragrance.
- Champagne** For medium to harder, less buffable finishes
- Jackaroo** For medium to hard finishes. Natural hair with synthetics reduces drag, enhances gloss.
- Buckaroo** For medium to hard finishes. Has hard, aggressive binder and natural hair. Less drag. Great on less buffable finishes.



Code: UH Series

Choosing the right Ultra High Speed Pad

With a choice of propane, battery and electric machines and speeds from 1100rpm to 3000+ rpm, added to polishes from soft fully buffable to medium and hard semi-buffable it has become difficult to choose the right pad considering the many permutations. Glomesh have the answer in their family of UHS pads to transform machine, respond to the floor finish and create a wet look shine. The result is the perfect answer.

Suggested Usage	Beige	Jackaroo Lite	Blue Ice	Coco	Jackaroo	Champagne	Buckaroo
Propane 2000-3000							
Soft Buffable finish	●	●		●			●
Medium durable finish			●	●	●	●	●
Hard highly durable finish			●		●	●	
Battery 1500-2000 RPM							
Soft buffable finish	●	●		●			●
Medium durable finish			●	●	●	●	●
Hard highly durable finish			●		●	●	
Electric 1500+ RPM							
Soft buffable finish	●	●		●			●
Medium durable finish			●	●	●	●	●
Hard highly durable finish			●		●	●	
Electric 1000+ RPM							
Soft buffable finish		●		●			●
Medium durable finish				●	●	●	●
Hard highly durable finish					●	●	

These are generalised classifications based on our market research. We realise that terms and definitions may be different from manufacturer to manufacturer. However, we have used the above information to help determine pad compatibility with the various floor machines and finishes on the market.

High Performance Stripping ... the simple way to save



**GLOMESH
Emerald**

In floor care, 90% of the cost is labour and only 10% is supplies – the 90/10 rule.

If that formula can be changed by reducing labour costs, we save.

Assume a normal black pad costs \$10, the formula says we spend \$90 in labour for every \$10 spent on supplies.

Assume an Emerald High Performance Pad costs twice as much as a black pad, it costs us an extra \$10.

But if the Emerald pad strips in 25% of the time it takes to strip with a black pad we save 75% of the labour cost.

The labour cost is \$90. We save 75% of the \$90, which is \$67.

By paying an extra \$10 for an Emerald Pad we save \$67 in labour – a net saving of \$57 on \$100 or 57%

What a simple way to save.



GLOMESH Floor Pads – High Performance Stripping

Emerald – The most aggressive, fastest stripping pad, strips in a quarter of the time of a black pad. Emerald lasts longer and has greater consistency than any pad before.

Code: TH Series



GLOMESH Floor Pads – Auto Scrub and Pre-Burnish

Coral: Especially designed for Auto Scrubbers. Better than any red or blue pad. The perfect scrub without being over aggressive. Has good fluid through-flow for Auto-Scrubbers. Great for UHS Spray Buffing – shine and clean simultaneously – at Ultra High Speed. Also use as a Pre-Burnish pad to remove dirt and black heel marks at Ultra High Speed.

Code: TKU Series



GLOMESH Floor Prep Pads

Green Semi Thinline: The perfect “cut-back” or dry strip pad offering environmental benefits and labour saving floor maintenance. Used dry – no harsh chemicals or detergents needed. Removes 1-3 coats of polish, removes inground dirt layers ready for re-applying polish. No need to scrub with water and detergent so there’s no water pick-up or drying time. Save labour. All fibres are recycled polyester.

Code: TP Series



GLOMESH Floor Pads – Wood Floor

Sandscreens: Especially made for wood floor preparation prior to polish application. Silicon carbide coated screen discs, each fibre fully coated. In choice of 7 grits: 60, 80, 100, 120, 150, 180, and 220.

Code: TS Series



Sandscreen Driver: Unique white sandscreen driver – sandscreens stick to it like glue. Eliminates screen sling, extends sandscreen life. Far more effective than a floor pad – and more economical.

Code: TS400WHT

Denib Pad: A wine thinline pad, 8mm thick, denibs wood floors between coats. Results in far better final gloss.

Code: TS400WIN



GLOMESH Floor Pads Rectangular

Available in three standard sizes for most orbital-style machines. Available in all the grades available in circular pads. Can be custom made to any size.

Code: TK1218



WILEN Carpet Bonnets

King – All cotton for extra absorbancy. Very thick pile. Designed for deep pile and shag.

Code: WLBNK17

Queen – A medium thick, highly absorbent looped end yarn with green cleaning strips. For thicker pile carpets.

Code: WLBNQ17

Prince – A lower profile, blue striped bonnet with tufted yarn for shorter pile carpets.

Code: WLBNP17

Glomesh Cyclone D

The most advanced diamond impregnated floor pad system devised to produce superb yet economically maintained stone floors. This no-polish-needed system saves 40%–50% of cost compared to polished floors plus produces a superb gloss.

400 Grit: To start preparation on more seriously worn floors, this aggressive pad is used with a Regular Speed Swing Machine or Auto-Scrubber and a little water or Cyclone Floor Conditioner. Great starting point for unpolished concrete.

TCYD40004

800 Grit: For normal preparation this is the first-up pad. Repairs light scratches.

TCYD40008

1500 Grit: Next stage of preparation. Micro-polishes the floor for improved reflection. Continues scratch removal.

TCYD40015

3000 Grit: Final stage of preparation. Floor now ready for daily maintenance with this pad especially with light coloured floors. Lifts gloss level, continues to remove light scratches. For maintenance use with either Regular Speed or for improved gloss, with UHS burnisher.

TCYD40030

6000 Grit: Final step for even better gloss especially with darker colours. Always use for granite maintenance. Capable of producing gloss to match newly-laid polish. Unique pad only available in Cyclone D.

TCYD40060



Glomesh Cyclone

A lower cost, even more economical system using a 3-pad process. Pads impregnated with ceramic rather than diamond.

White: First stage in preparation. Most aggressive of the three pads. Removes the worst of unevenness and scratching. Use with a little water or Cyclone Floor Conditioner and Regular Speed swing machine or Auto-Scrubber.

Code: TCYWHT SERIES

Yellow: Second Stage in preparation. Medium aggression. Continues mark removal and starts gloss improvement.

Code: TCYYEL SERIES

Green: Final Stage in preparation at Regular Speed before regular maintenance with the same green pad. For maintenance can be used with UHS machine plus, if desired, Cyclone Gloss Enhancer.

Code: TCYGRN SERIES



For more detailed information contact any Pall Mall office.

UNGER SmartFit™ WaterWand Standard

Regular Standard Chrome WaterWand channel and black moss rubber double squeegee for the most efficient water removal even on uneven or grouted tile floors. Easy Flush SmartFit™ socket for hygiene and cleanliness fits any standard handle. Colour coding chips with every squeegee. **Codes:** 45cm UNFFMW18A. 55cm UNFFMW22A.

UNGER SmartFit™ WaterWand Heavy Duty

Heavy Duty Chrome WaterWand with inbuilt splash protector and moss rubber double squeegee for efficient water removal on uneven or grouted tile floors. Extra wide gusset ensures longer life in tough conditions plus SmartFit™ socket with all its benefits. Colour coding in four colour chips with every squeegee. **Codes:** 55cm UNFFHM22A. 70cm UNFFHM30A.

UNGER SmartFit™ Sanitary Brush

All the benefits of a Heavy Duty SmartFit WaterWand plus:

- Fully moulded-in smooth, tough plastic for easy cleaning and controlling bacterial growth. Moulded channel incorporates built-in splash protector plus tough plastic bristle brush on one side of the channel to scrub dirty floor before squeegeeing.
- SmartFit™ socket adds to hygienic qualities plus colour coding chips to prevent cross-contamination. **Codes:** 45cm UNFFPB45G. 55cm UNFFPB55G.

Water Wand Standard

Soft, twin foam rubber blades conform to uneven surfaces leaving floors dry. Can use with aluminium handles. Adjustable socket accepts most 22mm handles. Available in sizes 45cm and 55cm. **Codes:** 45cm UNFSMW18. 55cm UNFSMW22

Water Wand Heavy Duty

Heavy-duty, galvanised steel construction with twin foam rubber blades. Moss rubber has two wiping edges. Features a splashguard built onto channel and reinforced socket. Can use with aluminium handles. In sizes 55cm and 75cm. **Codes:** 55cm UNFSHM22. 75cm UNFSHM30



Hand Scouring

Scrubbing Sponges

GLOMESH Scrubbing Sponges

Regular Duty: A regular duty scouring pad and absorbent polyether foam for efficient cleaning of dirty surfaces. Excellent for use around door knobs, counter tops, light switch panels, schoolroom desktops and a host of other areas. **Colours:** Green, Red.

Medium/Light Duty: A lighter duty cleaning pad and absorbent foam. Brilliant for cleaning locker fronts, cafeteria areas and washroom facilities such as paper towel dispensers, soap dispensers and ceramic tiles. Where light duty cleaning without scratching is required. **Colours:** Blue, White.

Non Scratch: The natural crushed walnut shell used as an abrasive provides aggressive cleaning action yet resists scratching delicate surfaces. Ideal for cleaning stainless steel, porcelain, glass, including cooktops and nonstick cookware. **Colour:** Walnut.

Sizes: 2 sizes available 150 x 100mm, 100 x 75mm. **Codes:** 150 x 100 SS640. 100 x 75 SS430.



gala Scrubbing Sponges

A highly effective economy version of Glomesh scrubbing sponges.

Colour: Green. **Size:** 150 x 100mm.

Code: SS640GSK

GLMESH Thinline: Commercial Grade

Non rust. Flexible to conform to cracks and crevices. Picks up dirt and food particles. Quick washout. Easy on hands.

Heavy Duty: Really tough jobs, very aggressive.
Colour: Black.

Medium Duty: Everyday use with good aggression.
Colours: Green, Red.

Light Duty: For non-aggressive cleaning and non-scratch.
Colours: White, Blue

Sizes 225x150mm, 150x100mm, 100x75mm

Codes 225x150 HN960. 150x100 HN640. 100x75 HN430



Thinline: Economy Commercial Grade

Use where price economy is important and in quick-disposal locations e.g. fast-food outlets. **Colour:** Green. **Size:** 225 x 150mm.

Code: HN960GSK



GLMESH Gentle: Non-Scratch

Powerful, scratch-resistant cleaning. Use on stainless steel equipment in food processing or health facilities, on glass, ceramic, copper, porcelain. Uses crushed walnut shells which clean without scratching. New ergonomic design.

Also available in 225 x 150mm and 150 x 100mm.

Code: HNGLOGEN



GLMESH Thickline:

Glitterpads – Regular: Use with Glitterbug or Handbug scrubbing tools.

Size: 250 x 115mm, nominal 25mm thick.

Code: HKGLP

Glitterpads – High Performance: For extra abrasion.

Size: 250 x 115mm.

Code: HKGLPPER



Scrub-A-Dub: For Scrub-A-Dub Hand Tool or for use on its own by hand. Seven grades. **Size:** 150 x 100mm, nominal 25mm thick.

Code: HK641

Ten-Pack: Assorted grades, 10 pads 125 x 75mm per pack.

Code: HK531A10



RubOut Microfibre Sponge

Microfibre Sponge removes marks from scrubbable surfaces with minimal moisture, gentle rub and no chemicals. Crayon, soot, pen, pencil, grease, white board markers and much more. **Size:** 180 x 85 x 40mm.

Code: SM18854



Scrubbing Tools & Accessories



GLOMESH MicroBug

Strong nylon hand scrubber complete with microfibre MicroBug pad. Ideal for dusting and hygienic cleaning of any hard surface. **Code: GBMFBUG**



GLOMESH MicroBug Pad

MicroFibre pad for use with any hand scrubber using Velcro or similar gripping material. Colour code tags to identify intended work area – stop cross-contamination. Use on tile floors and walls, polished timber, sealed vinyl. **Code: GBMFGLP**



Glitterbug

Strong all nylon hand scrubber. The plastic socket takes a standard broom handle and connects to the plate with a plastic swivel-action hinge. Strips of hooks hold the pads in place. Use on all hard floors and baseboards. Comes complete with three Glitterpads.

Bug size: 225 x 95mm. **Pad size:** 250 x 115mm.

Code: GBGLBGL3



Handbug

Comes with a plastic trowel-type handle moulded to a rigid vinyl base. Strong, hygienic, easy to clean with strips of hooks to hold pad in place. Use to hand scrub hard-to-reach areas; stairs and risers, under furniture and in corners. Comes complete with three Glitterpads.

Code: GBHNB003



Scrub-A-Dub

A smaller, very versatile hand scrubber, supplied with three interchangeable pads. Coarse for floors, griller and hard surfaces. Medium for work tops, chopping boards, etc. Fine for tiles, shower recesses, glass.

Tool size: 140 x 80mm. **Pad size:** 150 x 100mm.

Code: GBSAD003



SplashGard

Prevents splashing during stripping and scrubbing. Designed to fit around a standard 400mm machine, it prevents the cleaning solution from splashing onto baseboards or furniture. At the same time SplashGard also protects electrical cord from catching in the pad drive, pad or brush. SplashGard is made from tough, flexible PVC, resists cracking or splitting and is easily cleaned.

Code: GBSPLASH



Stripping Boots

Better traction on wet surfaces, reduce slip risks. Also protect footwear from chemical damage. Safety yellow rubber overshoes with replaceable abrasive pad soles. Soles double as kickpads to remove marks. Essential OH&S item.

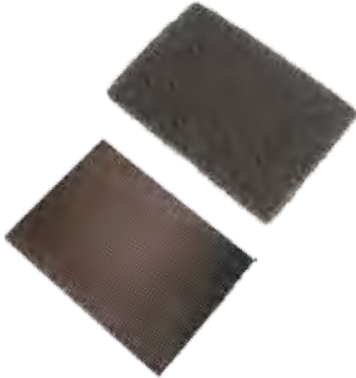
Code: GBGSB0.



GLMESH Griddle Holder – Plastic, Heat Resistant

Trowel handle holder, similar to steel but in plastic able to resist up to 200°C. Has moulded-in hooks beneath the plate to grab and hold the griddle pad.

Code: GSGGPH10



GLMESH Griddle Pads

An open mesh abrasive pad to use with the griddle pad holder to clean, polish and shine the grill after cleaning with the screen. Used with griddle screen to hold and drive the screen. Available in grey.

Code: GSG64PAD

GLMESH Griddle Screen

Open mesh abrasive screen that removes burned-on foods and grease quickly and efficiently. Use together with the griddle pad which is inserted between the griddle screen and the pad holder.

Code: GS55A000



GLMESH Griddle Cleaning Kit

A complete kit which includes plastic, heat resistant griddle holder, two screens and two griddle pads.

Code: GS461KIT



GLMESH Grill Bricks

For cleaning dirty, residue encrusted grills and griddle plates. Can be used safely on hot grills without scratching or lifting the grill cure.

Size: 200 x 100 x 88mm.

Code: GSGBRICK



GLMESH Stainless Steel Scourer

Our stainless steel scourers are made of premium stainless steel. They are perfect for use in food handling and production areas. They are resistant to alkaline cleaners commonly used in dish and pot cleaning. Each scourer a giant 50gm.

Code: SST40050



GLMESH Pot 'n' Pan Scrub

An extra thick, tough, open web, ultra duty nylon scouring pad. Will not rust or splinter, damage hands or finger nails as steel-wool scourers can. Complements the large range of nylon scourers and scrubbing sponges.

Available in one size 125mm x 90mm.

Code: HK88ABST

gala Lobby Dust Pans

- Colour coded in red, blue, green, yellow and black
- Custom moulded to give the largest pan capacity. Less unload trips saves time
- Enhanced angled lip ensures cleaner pick-up
- Reinforced yoke at bottom of handle strengthens a common breakage point
- Innovative, strengthened and enlarged feet at back of pan underside counters wear from dragging pan on floor
- Ergonomic L-Handle reduces the strain of carrying
- Independent, replaceable broom clips easily replaced if damaged
- Moulded-in broom cleaning comb.

Code: BLOBD262



gala Lobby Dust Pan Brooms

Colour-coded to match Lobby Dust Pans – red, blue, green, yellow and black
Angled bristles make it easy to sweep into the pan.
Flexible fibres make sweeping effective on carpet or hard floors.
Lightweight. Cuts fatigue, eases one-handed use.

Code: BLODBRH



gala Lobby Lidpan

- Lid opens automatically as pan is placed flat on the ground.
- Lid closes automatically as pan is lifted off the ground.
- Wheels under the pan make it very mobile – no need to drag pan.

Code: BLOBDLID



UNGER Duster Brush

The oval shape makes this tool ideal for cleaning ceiling fans, removing cobwebs and dusting ceilings and walls. Metal wire construction with 100% polypropylene bristles. Easily screws onto all Unger extension poles. Code: UNDBWALB



UNGER Pipe Brush

Constructed of heavy duty galvanised wire and 100% polypropylene bristles. Can dust large and small areas. The round shape makes this tool ideal for removing dirt and dust from pipes and other rounded surfaces. Screws onto all Unger extension poles. Code: UNPBPIPE



gala Bunny Ears

Split cotton mop slides onto double-loop, plastic-covered, flexible frame. The divided mop attaches to extension poles to reach difficult surfaces – fan blades, high shelves, air-conditioning ducts. Frame loops can be bent to suitable shape.

Codes: Frame WLBESDFR. Mop Refills WLBESDRE



Carts Bins & Buckets



Cleanup Cart

Standard model has easy-opening hood lid, opens both sides, hinged door each side and sturdy aluminium frame. Locks on both doors and both hood lids for security, excellent easy-to-use tool holders for mops, brooms etc., two buckets for cleaning accessories and a pair of caddies under the hood lid. Large black or yellow bag choice.

Code: BSCGALCT.

Other models available to suit. For example remove dome, add an additional bag, no shelves or any other profile as required.



Janitor's Cart

Designed to carry all a cleaner's needs on the one cart. The two upper shelves carry disposable refills – airfresh aerosols, soap, chemicals, a maid's basket. The lower shelf can carry a mop bucket. There are hooks and brackets for sweeping tools, mops, cleaning cloths and safety signs. Includes a garbage bag.

Code: BSCJANCT



Tilt Cart

Pedal controlled tip device makes tipping effortless. The bin is hinged at the front. Depress the pedal, the bin is released for easy tipping. Drop the bin back into its catch and wheel away on four tough nylon wheels. The 450 litre capacity bin, despite its size, fits through standard doorways. Collect garbage bags, waste, laundry in shopping centres, factories, hotels.

Code: BBIN450B



Swing Top Tidies

Available in a choice of three sizes, the bins are tough, commercial quality plastic which resists cracking. The weight attached to the lid ensures positive and precise closing while the top, together with the lid, can be removed easily to clean and to replace bags. Supplied complete with Binch bag holder.

Codes: 23 Litre BSWNTT23. 42 Litre BSWNTT42. 58 Litre BSWNTT58



Binch Bin Clasp

Attaches to any bin, any size to hold the bin bag firmly in place. No more bag cave-ins. No more messy bins. The patented Binch's firm pinch action grabs and holds the bin bag. No more need to tie knots or use rubber bands and bag changes are so easy.

Codes: Beige BSBINCHBE. Black BSBINCHBK. Grey BSBINCHGY. White BSBINCHWT.



Window Cleaning Bucket

Complete with four castors for mobility. Saves carrying. 48cm long to take regular sizes of window squeegees and washers up to 45cm.

Code: BBUCWIND.



Scent Aire fresh and fragrant **Air Care System**

Scent Aire **Regular 3400 Refill**

Gives 3400 sprays of a choice of five fragrances, all odour neutralizers, not odour masking. Convert malodours into beautiful long-lasting fragrances.

Scent Aire **Maxi 6000 Refill**

Standard size can but 6000 sprays thanks to the clever valve. Delivers smaller burst of concentrated, beautifully fragranced odour counteractant. Smaller droplets stay suspended longer, fragrances last longer. Much more economical. Double the fragrance, not double the price.

Scent Aire **Digital Dispenser**

Use for either Regular or Maxi cans. Can be infinitely programmed for start and stop times, spray intervals. With LCD display.

Code: BCAD270M

Codes:	
Country Garden	BCFON3CG
Sandalwood	BCFON3SW
Riviera	BCFON3RV
White Jasmine	BCFON3JA
Sparkling Lemon	BCFON3LE



Codes:	
Country Garden	BCFON6CG
Sandalwood	BCFON6SW
Riviera	BCFON6RV
White Jasmine	BCFON6JA
Sparkling Lemon	BCFON6LE



Scent Aire **Micro 3000 Refill**

Half size can yet dispenses 3000 sprays just like the big cans. Special valve dispenses concentrated fragrance with tiny droplets that stay suspended and perfume the air for longer.

Scent Aire **Micro Digital Dispenser**

Compact to take the Micro refills, otherwise duplicates the functioning of its big brother.

Code: BCAD170A

Codes:	
Country Garden	BCFAM3CG
Sandalwood	BCFAM3SW
Riviera	BCFAM3RV
White Jasmine	BCFAM3JA
Sparkling Lemon	BCFAM3LE



Scent Aire **AirCare Kit**

Ready to go. A Micro Digital Dispenser plus four different fragrance refills, a battery for the dispenser, a microfibre cloth and a walnut non-scratch sponge scourer. All aimed at washroom use.

Code: BCSAKIT.



Scent Aire **Sanitiser System**

Easily installed into the toilet or urinal without plumbing, the dispenser discharges into the toilet or urinal an odour neutralizer that leaves a fresh fragrance as well as cleaning the unit at the same time. The dispenser is fully programmable, has an LCD display and operates on a single AA battery for up to 12 months. In addition one dispenser can service two units simultaneously.

Codes:	
Dispenser	BCOS500A
Lemon Fragrance	BCCF500L
Paradise Fragrance	BCCF500P
Forest Fragrance	BCCF500F



Scent Aire **Continuous Cartridge System**

No sprays, no liquids, no gels. An impregnated wadding inside a plastic cartridge allows the slow, even fan-driven, continuous release of fragrance into the air. The cartridge is supplied complete with a battery. Both last 30 days so are easily and quickly replaced on the same date every month.

Codes:	
Dispenser	BAICB350
Paradise Fragrance	BAICARTP
Ocean Breeze Frag	BAICARTO



Scent Aire Continuous Air Care System: Z-Aire

Z-Aire system requires no batteries, propellants or VOCs. Cartridges offer 60 days continuous fragrance 24/7 in passive mode releasing consistent fragrance levels. Choice of four fragrances.

Codes:	
Dispenser	BAZDISP
Citrus Zest Fragrance	BAZ777CZ
Fresh Blast Fragrance	BAZ778FB
Cherry Burst Fragrance	BAZ779CB
Orchard Zing Fragrance	BAZ780OZ



Scent Aire Air Sponge Odour Absorber

Revolutionary. Air Sponge totally absorbs and eliminates offensive odours and microscopic pollutants suspended in the air. Excellent in hotels, hospitals, post-disaster restorations e.g. fire. Removes lingering effects in upholstery, clothing, curtains. One tub for 28 sqm lasts 4-6 weeks.

Code: BARSPONG



Washroom & Air Care

Foam Soap Dispensers



ClearVu Foam Soap Dispenser – 1300ml Capacity

- Produces rich, luxurious foam with quality foam soap
- Soft-touch push bar. Ideal for children and the disabled, requires minimum pressure
- Tank removes from back-plate for ease of soap refill
- Bulk fill ensures great economy. Compare the cost per hand-wash with cartridge or pouch systems
- Approximately 5000 pumps per tank
- **Colour:** White.

Code: BSOC9344



Encore Foam Soap Dispenser – 900ml Capacity

- For smaller environments with less traffic
- All the characteristics of ClearVu but with snap-on lid instead of key release
- Approximately 3500 pumps per tank
- **Colour:** White.

Code: BSOC9335



Bulk Foam Soap – 5 Litre

- Bulk soap is one-third or less of the cost of pre-packed cartridges
- Gentle to the hands. Contains moisturiser
- Soft-feel, luxurious foam
- Foam does not run off hands before hand-wash is complete. Code: BSOCSOAP



Liquid Soap Dispensers



ClearVu – 1300ml Capacity

- Use with most soaps including antibacterial and antiseptic (not pumice)
- Light pressure push bar excellent where disabilities or young children prevalent
- Water resistant lid – can use for body soap in showers
- Tank removes from hidden backplate – saves lugging heavy drum – take tanks to soap source
- 1300 dispenses per filling. Saves refill labour
- Ideal for large use environment.

Codes: White BSOC9346. Grey BSOC9347



ClearVu Encore – 900ml Capacity

- Perfect for smaller use situations: doctors, restaurants, office washrooms
- Available in two colours – grey or white
- Same shape and lines as ClearVu but smaller dimensions
- Removable from backplate for easier refilling. Code: White BSOC9330. Grey BSOC9331

Triad

- 1500 ml capacity
- Designed for liquid or lotion (not pumice)
- Push plunger valve has Viton O-ring for longer life
- Dispenses .5ml per stroke
- Solid grey body
- Sight glass to see soap level.
- Tank removeable from backplate for easier refilling
- Lid unlocks for removal with special key supplied.

Code: BSOAG935.



Stainless Steel

- 1.2 litre capacity with sight glass to check level
- Versatile – takes liquid or lotion
- Service key and tough construction deters vandals
- Stainless steel prevents corrosion or rusting while maintaining modern washroom appearance
- Available in vertical model as well as horizontal for confined spaces.

Codes: Vertical BSOS4040. Horizontal BSOS4020.



Grit Lotion

- Rugged design for industrial/commercial use
- Tested to withstand abrasive soaps such as pumice, plastic beaded, sand-based, D-Limonene
- Hand or elbow operated – convenient when hands are very dirty
- Stainless steel internals resist corrosion for long life.

Code: BSOAP131.

Flat-Top Jugs

- 4 litre jug available. Acts as tank for Grit Lotion dispenser.
- Additional jugs for pre-packing soap available separately.

Code: BFLTJ170.



SaniBag

Neat little washroom accessory dispenses disposable sanitary napkin bags. The dispenser is only 110 x 170mm, holds 2 x 50 = 100 plastic sanibags. Bags supplied 50 per pack. Perfect complement to sanitary napkin receptacle.

Code: Dispenser BSAEB100. Refills BSABR100.



Sanitary Napkin Receptacle

Has “No Touch Emptying” feature. Hinged body swings out allowing the waxed bag insert and contents to drop out into waste bin. “No Touch Emptying” cuts disease spread. Simply close unit and insert fresh liner from the top. Enclosed is a self-adhering sticker to be placed at the front or on top of the unit, informing patrons of unit’s use. Waxed bag replacement liners available – 250 bags per pack.

Code: Receptacle BSARE112. Waxed Bags BSABA111.

Toilet Bowl Mops – Duralon

Duralon Mop is resistant to acid bowl cleaners. The mop holds liquid (unlike a brush) for better cleaning of entire pan including rims. **Code:** BMOPD204



Pee Wee Urinal Screen

- Keeps debris out, stops clogged drains
- Built-in deodoriser plus cherry fragrance enhances washroom
- Good flow-through with no splash-back.



Code: BURI1440.



Toilet Roll Dispensers – Chrome

- Available in single or double roll
- Offers roll security – close the hinged lid to secure the roll until the core is exposed when the unlock spring can be activated
- Capacity up to 500 sheet roll
- Tough 18gg chromed steel.

Code: Single BTO12500. Double BTO12501.



**Air Freshener
Country Garden
400g**

Beautiful fresh floral fragrance – like a summer's day.

Code: Country Garden APAF04AP.



**Air Freshener
White Jasmine
400g**

The sultry sensation of a tropical fragrance permeates and freshens the whole room.

Code: White Jasmine APAF11AJ.



**Fly & Insect
Spray
400g**

Equals knockdown effect of any spray available.

Spray through cap for a speedy attack.

Code: APGALAFS



**Surface Insect
Spray
350g**

Very powerful concentrate formulation stops crawling insects dead.

Residual surface spray keeps on killing.

Code: APGALASS



Stainless Steel Cleaner & Polish 400g

- Concentrated, use a little to improve appearances a lot
- Leaves a bright, finger mark free surface.

Code: APHT05SS



Glass Cleaner 400g

- Sprays on as foam, no run-off from vertical surfaces
- Spray and wipe for perfectly clean glass – beats liquids.

Code: APHT01GC



Chewing Gum Remover 300g

- Freezes chewing gum for easy scrape off
- Leaves no residue
- Very easy application.

Code: APHT04CG



Furniture Polish with Lemon Oil 400g

- Use little – goes a long way. Very economical
- Leaves delightful lemon fragrance
- Easy aerosol application beats waxing wood.

Code: APHT03FP



Foaming Carpet Cleaner 400g

- The perfect spotter
- Sprays on as foam. Work into dirty area with sponge, let dry. Vacuum, job is done!

Code: APHT02CG

General Purpose – GPS

- Delivers 50% more per stroke – 1.4ml
- No-leak cap
- Choice of red, white or blue

- Ergonomic 3-finger grip
- 250mm (10") tube.

Code: BTRIG490



General Purpose – Continental

Nozzle adjustment for spray or jet. Fits all standard 28mm necks. Extremely reliable, top quality, long life sprayer. Red and white.

Code: BTRIG580



Chemical Resistant – Continental

Design as Continental General Purpose but has PTMT chemical resistant plastic. Yellow and white.

Code: BTRIG608



Chemical Resistant – Contour

Handles many, though not all harsh chemicals, even some solvents, acids and alkalis thanks to Viton seal at nozzle. Colour grey.

Code: BTRIG568



Conical Bottle – 500ml

No-tip polythene bottle with 28mm neck, specially designed for trigger sprayers.

Code: BBOTT500

Clean-up Accessories

Sundries

Maid's Basket

High, comfortable handles keep knuckles away from contents. High sides stop bottle fallout. Heavy duty polypropylene, tough for constant commercial use.

Code: Grey BMAID180.

Inserts: Inserts are used to keep bottles and supplies in position and are available in grey (pictured).

Code: Grey BMAIDINS.



Tool Holder

To organise equipment in storage areas. Keeps mops, brooms and tools off the ground. No springs or rusting parts. Utilises an angled sliding roller which allows different diameter handles to be secured.

Code: BTLHD725

Tool Holder Bar

Mounts three holders together.

Code BTLHD003



Foam Gun

Water pressure operated, hose-end Foam Gun with 2.7 litre capacity. Produces rich foam for degreasing or disinfecting vertical surfaces. Adjustable dilution ratios for the cleaning of vehicles, coldrooms, food area walls and other large areas. Attach to garden hose. Sprays detergent liquid solution as far as the hose sprays water.

Code: BFGUN750



Code: BPUFO750

Pump Up Foamer/ Sprayer

Unique nozzle offers the option of regular spray or thick foam. 1.7litre capacity, tough, durable. Heavy duty Viton O-ring. Features a pressure release valve and is resistant to a wide range of chemicals.



Junior Pump Up Sprayer

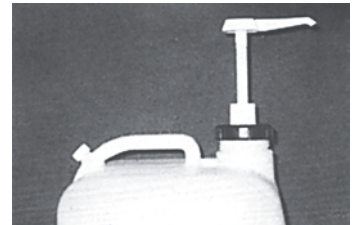
1.3 litre capacity with thumb-lock to prevent hand fatigue plus trigger lock to stop unprogrammed dispensing, Viton seal to increase chemical resistance, a metal plunger to increase durability. Nozzle adjusts from spray to jet. This is a commercial, not a domestic, sprayer.

Code: BPUF7548

Econo Pump

Pumps 28ml per stroke. Removable 38mm cap replaceable with own drum cap. 425mm tube reaches bottom of 25litre drum. Use in food application, most disinfectants, all detergents.

Code: BECP904A



Drum Pump: Heavy Duty Siphon

For 200litre drums, delivers 25litre per minute. Threaded adaptor screws into drum bung. Use for many chemicals excluding strong solvents.

Code: BDRMP237



Drum Spigot

In two sizes, 50mm or 18mm. Large opening for viscous liquids. Made of Polyethylene. Unaffected by most acids, caustics, oils. Universal thread fits most standard drums.

Code: 50mm BSPIG420. 18mm BSPIG425



A-Frame Safety Sign

- Choice of two messages and duo message, also blank signs
- Choice of three colours with standard messages available in easy-see pink or bright yellow or orange glow
- Blank signs in easy-see pink, bright yellow and orange glow. Also white.
- Heavyweight plastic for longer life and greater stability
- Hinge limiter ensures legs open to correct position
- Also available: Custom messages to order.



Codes:	Wet Floor Yellow	BASAC11Y	Cl in Prog Orange	BASAC12R
	Wet Floor Pink	BASAC11P	Blank Yellow	BASACSYW
	Wet Floor Orange	BASAC11R	Blank White	BASACSWT
	Cl in Prog Yellow	BASAC12Y	Blank Orange	BASACSOR
	Cl in Prog Pink	BASAC12P	Blank Pink	BASACSPK

Extended Safety Sign

- Full 1m tall
- Can clip on optional chain for real barrier protection
- "Wet Floor" message in bright yellow
- Can be collapsed to easy-to-carry A-frame size.

Code: Wet Floor Yellow BAXTWFYL



Safety Cone

- Choice of messages, also blank signs
- Choice of three colours; easy-see pink, bright yellow, or orange glow
- 900mm high, four-sided with broad base for stability.

Codes:	Wet Floor Yellow	BASACO4Y
	Wet Floor Pink	BASACO4P
	Wet Floor Orange	BASACO4R
	Cl in Prog Yellow	BASACO5Y
	Cl in Prog Orange	BASACO5R
	Blank Yellow	BASACCYW
	Blank Orange	BASACCOR



Code: BASACSIG

Code: BASAF003

Code: BASAF008

Optional Extras

Caution Sign: Slots into top of cone for added impact.

Base Weight: Outdoor use to secure against high winds.

Barrier Chain: Yellow plastic chain slots into notches in the cone to create a long and, if required, continuous barrier.

Also Available: Your own messages – to order.

Safety Warning Signs

A full range of over 350 flat Warning Signs in choice of PVC or ColorBond Metal. Available in five sizes. See the separate complete catalogue for the full range.

Also Available: Your own messages – to order.



Safety Pole

Spring action pole fits standard doorways, narrow hallways and aisles. Compress the two sections, place in position, allow spring to open out the sections. Results in secure barrier to prevent entry. Includes easy-to-read sign in black on bright yellow. Extends 750mm to 1.1m. Excellent in public restrooms, e.g. airports, train stations. Use at lifts, escalators, in hallways, stairways, in factories, hotels, hospitals, schools.

Code: BSAP0917



Speed Humps

- For heavy and regular punishment from commercial traffic
- Slow and calm traffic in potentially dangerous environments
- 500mm long modules in black and yellow with 250mm long end pieces
- 50mm height slows traffic without creating a hazard
- Solid rubber.

Code: Mid-Section BSHMID. End Section BSHEND.



Wheel Stops

- Use at rear of parking spaces to protect cars, walls, kerbing
- Stops cars in adjacent spaces overriding into the next space
- Size 560mm long x 100mm high
- Made of solid rubber.

Code: BSHWSTBK.



Safety

Accessories

Expanding Mobile Barrier

- Easy to move, wheeled mobile barrier
- 600 x 330mm footprint when folded, expands to a full 4m long exclusion barrier
- Consists of a series of 900mm high, bright yellow panels
- Essential where serious exclusion for safety is required.

Code: BEXPMBAR.



Safety Tape: Safety Track

Stop slips on steps, ramps, walkways. Also use on equipment and on floors, wherever a slip problem could occur. "Safety Track" is a tough, durable, black, adhesive-backed, grit-surfaced tape. Use indoor or outdoor. First clean surface, peel off the paper backing and press in place. Available in rolls 25mm, 50mm.

Code: 25mm BJ3200S1. 50mm BJ3200S2.



Stripping Boots

Better traction on wet surfaces, reduce slip risks. Also protect footwear from chemical damage. Safety yellow rubber overshoes with replaceable abrasive pad soles. Soles double as kickpads to remove marks. Essential OH&S item.

Code: GBGSBO.



Professional Window Cleaning

Ninja Squeegee Handle

Three position channel locking. **Position One:** Channel is locked. **Position Two:** Flip the lock-tab over and the lock is open but the channel cannot fall out or be moved. **Position Three:** Push the lock-tab to fully open and the channel can be moved or changed. 180° swivel for pole work can be tightened to hold any angle.

Fits the Ergotec Locking Cone for safety.

Code: UNHNEN00

Ninja Channel and Rubber

The lightweight, strength and rigidity of aircraft aluminium means longer squeegees are excellent for large windows. Available in seven sizes from 35cm-92cm. Innovative, attached SmartClips make opening and closing to change rubbers quick and easy. Standard rubbers. No special rubbers required.

Code: UNCHAC Series

ErgoTec Squeegee Handle

First handle designed to fit the human hand. The Quick Spring Release allows quick and easy channel and rubber change or repositioning. The grip has moulded non-slip rubber and polypropylene components for great comfort and superb control, whatever your grip style. Use with notched stainless steel S-channels. In sizes 25cm, 35cm, 40cm, 45cm and 55cm.

Code: Handle UNHNETGO

Fits the Ergotec locking cone for safety.

ErgoTec XL Squeegee Handle

Specially designed for large hands, the XL is identical to the regular ErgoTec Squeegee handle except that it is 24mm longer, reducing the discomfort of a short handle in a large hand. Use with notched stainless steel S-channels.

Code: Handle UNHEXT00

Fits the Ergotec locking cone for safety.

Pro Stainless Steel Squeegee Handle

Made of stainless steel, the Pro is lighter and stronger than brass. Features a Fast-Lock handle for quick blade and channel changes. Non-slip moulded rubber grip handle fits comfortably in the hand. Available in sizes 25cm, 35cm, 40cm, 45cm and 55cm. Use with stainless steel S-channel.

Code: Handle UNHNPR00

Stainless Steel "S" – Channel

For use with ErgoTec and Pro Stainless handles. Stronger yet lighter than brass and rust-free. No clips required when used with these handles. Complete with EasyGlider Soft Rubber.

Code: Channel & Rubber UNCHNE Series

Golden Clip Brass Squeegee Handle

Professional quality solid brass is crafted to exacting specifications. Attaches to all Unger poles. Available in sizes 25cm, 35cm, 40cm, 45cm and 55cm. Use with Unger Brass Golden Clip channel.

Code: Handle UNHNGS00

Golden Pro Brass Squeegee Handle

Professional quality solid brass features Fast-Lock handle for quick channel or rubber changes. Coin adjustable screws hold channel at your desired tension. Non-slip rubber grip is comfortable in all weather conditions. Use with standard Brass Golden Clip channels.

Code: UNHNGP00

Brass Golden Clip Channel

For use with Golden Clip and Golden Pro Squeegee Handles. Complete with ErgoTec Soft Rubber and plastic end clips.

Code: Channel & Rubber UNCHGC Series



Ergotec Swivel Loc Squeegee Handle

This patented tool swivels and locks in any position. The ergonomic handle fits perfectly into the hand with the rubber insert preventing slip. Use with brass or stainless steel channels, sold separately. Option of 0° or 30° head.

Fits the Ergotec locking cone for safety.

■ 0° Straight Head cleans low windows right to the bottom moulding and allows you to squeegee at a distance from the glass. Compatible with brass and 'S' channel. **Code: UNSWLS00**

■ 30° Angled Head cleans arched and narrow windows. Work three times faster by cleaning windows on either side of a gondola or above ledges. Compatible with 'S' channel only. **Code: UNSWLA00**



Visa Versa

Work up to 20% faster with strip washer and squeegee in one. Features patented water wells for high water retention. Quick spring release for easy blade change. Accepts both stainless steel and brass channels. Excellent for pole work. Saves constant tool changeover. Available in sizes 35cm and 45cm.

Fits the Ergotec locking cone for safety.

Codes: 35cm UNVVVP35. 45CM UNVVVP45.



Plastic End Clips

Supplied in plastic case. Easy to carry in pocket. 40 individual clips per case, each clip easy to access. Solid plastic clip acts as wedge: slips in between channel and rubber. Increases the stability of the rubber. Superior to old-fashioned brass clips. Will not cut fingers when inserting. **Code: UNEPCLIP**



Soft Replacement Rubber

Replacement rubber for window squeegees is made with a new process. Our natural molded rubber provides a sharp, long-lasting edge. Each blade is hand inspected to ensure highest quality. Available in sizes 25cm, 35cm, 40cm, 45cm, 55cm, 65cm, 75cm, 92cm in packs of 12 rubbers. **Code: UNEGRR Series**



Ninja Washer Sleeve

The ultimate performance washer sleeve combines two separate fibres. Long, absorbent fibre gives superior water retention. Plus built-in rows of scrubbing bristles including microfibre to loosen dirt and grime without affecting the surface. Two abrasive pads, one each end, for extra scrub power.

Code: Sleeves 35cm UNWNJ35. 45cm UNWNJ45.

Ninja Washer T-Bar

Bio-component, anti-slip, lightweight handle designed to fit the human hand. Tough, light aircraft aluminium T-Bar. Coin adjusted swivel head for pole work. Superior performance with reduced arm and shoulder strain.

Code: Sleeves 35cm UNWNNI35. 45cm UNWNNI45.

Strip Washer – Micro Strip Sleeve

Microfibre technology with millions of little fibres removes dirt and grime better, makes rinsing dirt from the sleeve even easier, holds more than six times its weight in water which reduces constant re-wetting. And it can even be machine washed more than 500 times at high temperatures if required. Available in 35cm and 45cm sizes.

Codes: Sleeves 35cm UNWMNS35. 45cm UNWMNS45

Strip Washer – Monsoon Sleeve

Extra heavy-duty woven fabric provides maximum water holding and superior water releasing capability. Each sleeve has Velcro fastening, heavy-duty backing for longer wear and a non-abrasive end pad for scrubbing power. Available in sizes 35cm and 45cm.

Codes: Sleeves 35cm UNWSMS35. 45cm UNWSMS45

Strip Washer – Original Sleeve

Plush, woven synthetic fabric is machine washable. Reinforced zigzag stitched ends ensures long life. Also excellent for cleaning screens and dusting. Available in sizes 25cm, 35cm and 45cm.

Codes: Sleeves 25cm UNWOWS10. 35cm UNWOWS14. 45cm UNWOWS18.

Strip Washer – Ruf Face Sleeve

Plush, woven synthetic fabric is machine washable. Features a rough textured, non-abrasive nylon cleaning pad on one side. Reinforced zigzag stitching for longer life. Great for scrubbing dirty windows. Available in sizes 35cm and 45cm.

Codes: Sleeves 35cm UNWPRS14. 45cm UNWPRS18.

Ergotec T-Bar

Plastic T-Bar with ergonomic two component handle for a comfortable, non-slip grip plus water wells in the T-Bar for high water retention. Available in sizes 25cm, 35cm and 45cm. Use with all sleeves

Locks onto the Ergotec locking cone for safety.

Codes: 25cm UNWSET25. 35cm UNWSET35. 45cm UNWSET45.

Washer Handles – Swivel Strip Washer

Aluminium T-bar with nylon handle is adjustable and can be locked into seven different positions. Sleeve sold separately. Available in sizes 35cm and 45cm.

Codes: 35cm UNWSSV35. 45cm UNWSSV45.



Window Cleaning Kit – Bucket-on-a-Belt

All you need to add is water. This Unger kit has a 35cm squeegee plus a 35cm washer, a Safety Scraper and all contained in Unger's Bucket-on-a-Belt. Suspend that from the belt, drop in the squeegee, washer and scraper and just add water. **Code: UNWINKIT.**



Window Cleaning Kit – Display

Packed in an attractive see-through display box. Contains 35cm brass squeegee channel and rubber with Golden Clip Handle. 35cm Original Sleeve with Strip T2 T-Bar, Safety Scraper and Microfibre Window Cleaning Cloth. **Code: UNWCLKIT.**



The Belt

Made of 2" heavy duty nylon webbing. The belt adjusts up to 165cm and features two loops for tools and side release plastic buckle. Use with Bucket-On-A-Belt. **Code: UNBSUB00.**



Bucket-On-A-Belt

Redesigned and upgraded, Bucket-On-A-Belt holds all the tools needed – washer, two squeegees if required, safety scraper plus the essential cleaning fluid. Can be used by left-handed or right-handed workers. Leaves hands free for cleaning. Saves constant climbing up and down a ladder to re-wet washers. Special new snap-on catch to attach to belt or to ladder. **Code: UNBSBB01.**



Microfibre Window Cleaning Cloth

40cm x 40cm high quality green cloth designed to be used wet or dry. Excellent cleaning qualities. Can be machine washed many times. Very competitively priced. **Code: BM4040GN.**



Professional Gel

Highly effective cleaning gel, works on the dirtiest of windows. Skin-friendly, biodegradable, thick formulation for better dispensing control. Can be applied directly to washers. **Code: UNGLFG05.**



UNGER Pure Water Pole Systems

Unger nLite and CarbonTec Systems

Unger nLite and CarbonTec pure water pole systems designed for very high access to external glass, windows, fascias for cleaning from ground level.

These unique systems are fully detailed in separate catalogues.



Safety Scraper

Stainless steel scraper. Unique locking system helps prevent blades from dangerously sliding open while working. Replacement blades in boxes of 100.

Codes: Handle UNSCSR50. Blades UNSCSRB4.



Ergotec Safety Scraper

All the features of the Safety Scraper with the added comfort of the ergonomic grip which stops slipping when wet, keeps steel warm on cold days. Replacement blades in boxes of 100.

Codes: Handle UNSCSR04. Blades UNSCSRB4.



Pro Trim 10

Perfect size: fits the hand and pops in the pocket. Perfect Safety: Internal safety guard slides out to protect blade. Easy blade change: Unlock button opens scraper. Click button to close. 10cm replacement blades in 25 blade dispensers.

Codes: Handle UNSCTX10. Blades UNSCTR10.



Maxi Scraper

Economically priced. 10cm wide blade. Non-slip, two-component hand grip prevents slipping. Lightweight, non-tiring with constant use. Changing blades is simple. A push of a button releases the blade. 10cm replacement blades in 10 blade dispensers.

Codes: Handle UNSCMAXI. Blades UNSCRB04.



Ergotec Short Handle Scraper

Reversible tempered 10cm steel blade has blunt edge for cement or stucco work and a razor edge for scraping paint and tape. Two component handle with rubber insert to stop slipping also improves comfort in the hand.

Handle easily attaches to all Unger poles via the Ergotec Locking Cone.
10cm replacement blades in 10 blade dispensers.

Codes: Handle UNSCSH04. Blades UNSCRB04.



Long Handle Scraper

Lightweight and rugged scraper features 120cm handle and zinc scraper head. Angled 10cm blade has blunt and razor edges. Excellent for removing gum and wax build-up. Long handle allows use on floors or on windows where longer reach is required. 10cm replacement blades in 10 blade dispensers.

Codes: Scraper UNSCLH48. Blades UNSCRB04.



OptiLoc

The standard in the industry. Constructed of anodised extruded aluminium, these poles are strong yet lightweight. The ergonomic OptiLoc System locks and loosens in a half turn. Snap-in threaded locking cone adaptor is included. Available in 2 section: 1.2m, 2.5m, 4.0m. 3 Section: 4.5m, 5.5m, 9.0m.

Supplied with Ergotec locking cone to secure selected Unger tools in use.

Codes: 2 Section UNOLEZ Series. 3 Section UNOLED Series.



Tele-Plus

Made of anodised extruded aluminium, our unique modular system allows you to build the length you want up to 9.0 metres! 3.6m two section starter pole. Add extra 1.8m sections to make 5.4m or 7.2m or 9m pole if and when required.

Supplied with patented Ergotec locking cone.



Codes: 2 Section Starter UNEPTP26. Plus 3 UNEPTB16. plus 4 UNEPTC 16. Plus 5 UNEPTD16.

Cleaning

Fixi-Clamp

Made of fibreglass reinforced nylon. Innovative design quickly and easily grips sponges, rags, cloths, mop heads and brushes. Use with many types of cleaning solvents and liquids. Easily attaches to all Unger poles. **Code: UNFCFIXI.**



Hi-Flo Kit

Convert any Unger pole into a water pole. The 180° adjustable goose neck enables you to clean awnings, ledges, boats, windows, tops of vehicles and exterior walls. Hassle free wash and rinse capability with a turn of the dispenser dial. The all-purpose biodegradable scrub tabs last approximately 17 minutes. Regulate the water pressure with a turn of the hose adaptor. Pole kit sold separately. Length of tubing: 9m. **Code: UNPAHF10.**



Pole Adaptors

Cranked Joint Angle Adaptor

Made of nylon. Lightweight and durable. Adjust tools to clean at any angle up to 300°. Squeegees, washers and other tools can be quickly attached. **Code: UNADCJNO**



Ergotec Locking Cone

Provides maximum safety when working with poles. A selection of Ergotec tools are designed to lock onto the cone so that they will not dislodge when working at height. Also incorporates ACME thread for screw-on tools. **Code: UNCONCAN.**



Trigger Nabber

- Focussed on ergonomics – very comfortable trigger grip. Ideal for use over long periods
- Light to hold with lightweight, durable aluminium shaft. Reduces fatigue.
- Head can swivel 360°. Allows use in hard-to-reach areas and with difficult items.
- Magnetic tip embedded in the head. Easy pick up of the finest metal objects such as steel needles, paperclips, pins. **Code: UNPTNT09.**



Nifty Nabber

Innovative, multi-purpose tool. Our improved tool is excellent for picking up bottles and debris as well as cleaning urinals and retrieving items out-of-reach. It is the ideal extension to your arm. The Nifty Nabber is made of aluminium and features rubber, overmoulded steel fingers. Powerful claws grip small and odd-shaped objects.

Short handle: 45cm long for use where reach over distance is not important but manual handling is unacceptable e.g. lifting urinal screens out of stall urinals or lifting syringes out of public transport seats. **Code: UNPTNN40.**

Long Handle: Choice of two sizes 90cm and 140cm long. For use where distance handling is important. Allows, particularly, collection of items such as bottles, cans, syringes and other debris from ground level. Also useful to reach up to high shelves. Avoids OH&S issues. **Codes: 90cm UNPTNN90. 140cm UNPTNN14**

Extra Long Handle: Unique 240cm long for use at very long distances e.g. debris in a pond, collecting debris off railway tracks from station platform. **Code: UNPTNN24**



Peoples' Paper Picker Pin

Ideal for picking up paper debris and cans. Made of lightweight steel. 100cm length. Replacement pin plugs are available. **Codes: Picker UNPTPPPP. Pins UNPTPINP**



Nifty Nabber Bagger

The perfect waste carrier, especially for outdoor use. With a solid plastic bottom and two carry loops it can be easily pulled across uneven or even surfaces. Can take 180 litre garbage bag or used as is. Collecting into an unsupported garbage bag results in torn/broken bags. Place the bag inside the Bagger for protection. And no more carrying full, heavy bags or, worse, bins. Collapses for storage. Perfect complement to Nifty Nabber grabbing tools. **Code: UNPTNB30**



Entrance Mats:

A wide variety of styles, sizes and colours, including made-to-measure, for every area from ultra heavy duty, high traffic to mini-mats for smaller entrances with less traffic.



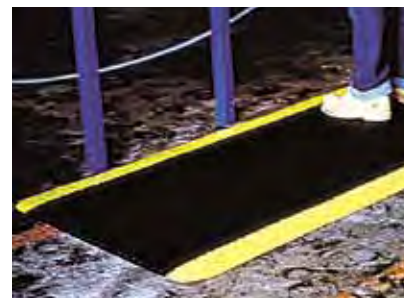
Rubber Mats:

So many varieties to cover all eventualities. Mats with built-in connectors to build runners or workstation mats. Grease resistant for fatty or oily areas, mats that drain for wet areas and many more. All in resilient, odourless, synthetic and natural rubber.



Anti-fatigue Mats:

Mats in runners or single mat sizes, with tough vinyl top-surfaces in various styles, thick soft resilient foam for foot comfort and many with non-slip bonded-on underlay. Where long-term standing on cold, hard floors demands relief.



Wet Area Mats:

Mats that shrug off water, are kind to bare feet and help stop slips. Ideal around swimming pools, in showers, in front of baths.



Special Purpose Mats:

Welding mats, mats for sterile, dust-free areas with disposable adhesive layers. Chair mats for under desks, special fruit and veg mats for supermarkets, electrical insulating mats and many more.



Protective Runners:

For safety and floor protection, variously patterned tough vinyl provides floor protection and sure footing at nominal cost. Protects all floor surfaces including carpet to prevent wear from constant traffic.



We're **Easy** to Contact

BRANCHES IN ALL MAJOR METROPOLITAN CITIES



TELEPHONE



FACSIMILE



EMAIL

Sydney	02 9584 8644	02 9584 8744	enquiries@pallmall.com.au
Melbourne	03 9357 7567	03 9357 7568	
Brisbane	07 3274 4908	07 3274 5818	
Perth	08 9434 9388	08 9434 9866	
Adelaide	08 8298 1778	08 8296 4663	



Free Advice. Tell us your problem. Our consultants have many years experience and abundant knowledge. We are happy to help.



Free Educational Seminars. Whether one sales rep or one hundred contractors, we will run training and educational seminars in our areas of expertise. Just ask!



You don't have to be a giant buyer. One item or one hundred, we value every need. Together with our nationwide distributor network, we can help you.



Free Educational Tools are Available. Ask to see our free CDs and literature – all designed to add knowledge and understanding.



GLOMESH



Scent Aire



P M PALL MALL
PALL MALL MANUFACTURING COMPANY PTY LTD